

PRESSURE DIFFERENCE REQUIRED FOR VALVE OPERATION

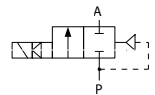


TECHNICAL DATA:

- **Internal parts:** stainless steel
- **Seals:** NBR, EPDM, FPM
- **Fluid temperature:** -10°C to +85°C (NBR); +100°C (EPDM, FPM)
- **Ambient temperature:** max +55°C
- **Viscosity:** max 21 mm²/s
- **Response time:** opening 0.05 - 1 s; closing 0.5 - 4 s
- **Voltage:** 230, 115, 48, 24 V AC; 24, 12 V DC
- **Duty cycle:** continuous (ED100%)
- **Cycling rate:** 10 - 100 cycles/min
- **Electrical protection:** IP65 (with plug to ISO 6952 / ISO 4400)

Long term use in humid environment requires the use of sealing sets.

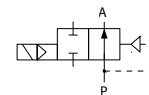
Closed when de-energised (NC) Fluid symbol



Ports	Orifice size [mm]	Kv (water at 1 bar) [l/min]	Differential pressure [bar]		Body	Mass [kg]	Coil type	Model	Order code 230 V AC coil	Fig.
			min	max						
G1/2	10	20	0.3	10	Brass	0.34	TM25	M2401	341600	1
						0.5	TM25	M2401*	340002	
				12	Brass	0.42	TM30	M24K	340505	
					INOX	0.42	TM30	M24N	386210	
G3/8	10	20	0.3	10	Brass	0.34	TM25	M2401	341630	1
				12	Brass	0.43	TM30	M24K	341505	2
G3/4-20mm	18	70	0.3	10	PA	0.46	TM25	M255C	352612	4
G3/4	18	70	0.3	10	PA	0.46	TM25	M255	352611	
				12	Brass	0.57	TM25	M251	350613	
				16	Brass	0.66	TM30	M250	350510	
G1	25	180	0.3	12	Brass	1.1	TM25	M261	360613	6
						1.2	TM30	M260	360518	
				16	Brass	1.2	TM30	M260	360513	
G6/4	40	350	0.3	12	Brass	2.3	TM25	M271	370610	7
						2.4	TM30	M270	370511	
				16	Brass	2.53	TM30	M270	370512	
						2.53	TM30	M270R**	370510	
G2	50	630	0.5	16	Brass	4.5	TM30	M286	390510	8

*Zero water hammer design

**With regulated shut-off speed



Open when de-energised (NO) Fluid symbol

Ports	Orifice size [mm]	Kv (water at 1 bar) [l/min]	Differential pressure [bar]		Body	Mass [kg]	Coil type	Model	Order code 230 V AC coil	Fig.
			min	max						
G1/2	10	20	0.3	10	Brass	0.34	TM25	M24NO	349600	1
				12	Brass	0.42	TM30	M24KNO	349516	2
G3/8	10	20	0.3	12	Brass	0.42	TM30	M24KNO	349518	2
G3/4	18	70	0.3	12	Brass	0.66	TM30	M250NO	359511	5
G1	25	180	0.3	16	Brass	1.2	TM30	M260NO	369512	6
G6/4	40	350	0.3	16	Brass	2.4	TM30	M270NO	379512	7
G2	50	630	0.5	16	Brass	4.5	TM30	M286NO	391510	8

OPTIONS:

- EEx me II explosionproof coils
- INOX body
- NPT ports
- Other versions on request.

PRESSURE/TIME DIAGRAM - DIAPHRAGM VALVE CLOSING:

- 1. Ordinary diaphragm valve closing
EXCESSIVE WATER HAMMER



- 2. JAKŠA diaphragm valve closing
NO WATER HAMMER

